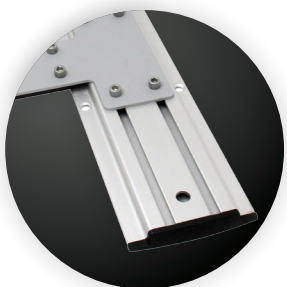


Dual Stud Spanning Wall Track



KNAPE & VOGT®



INTELLIGENTLY DESIGNED

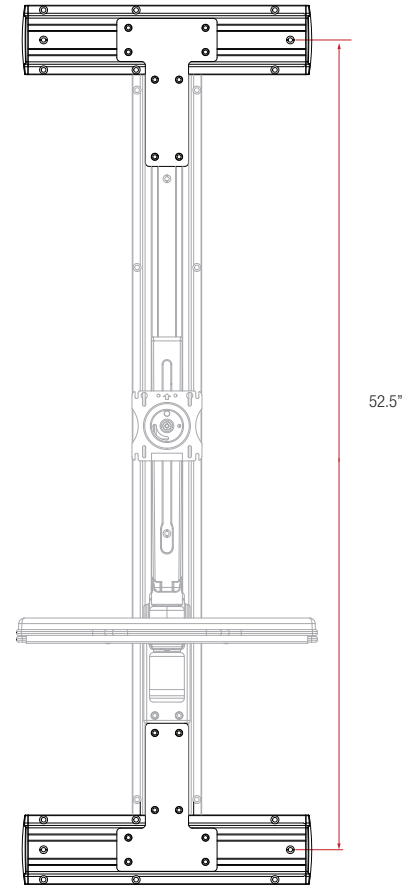
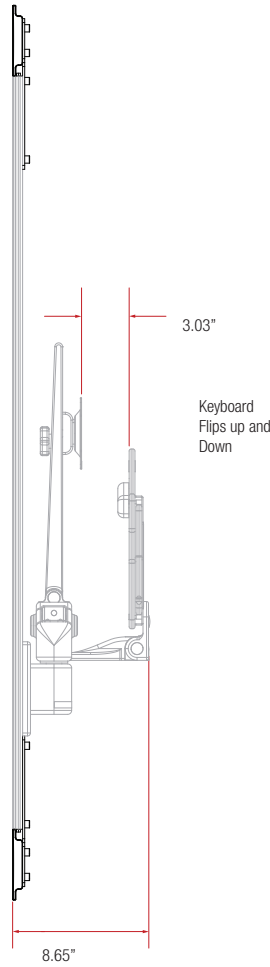
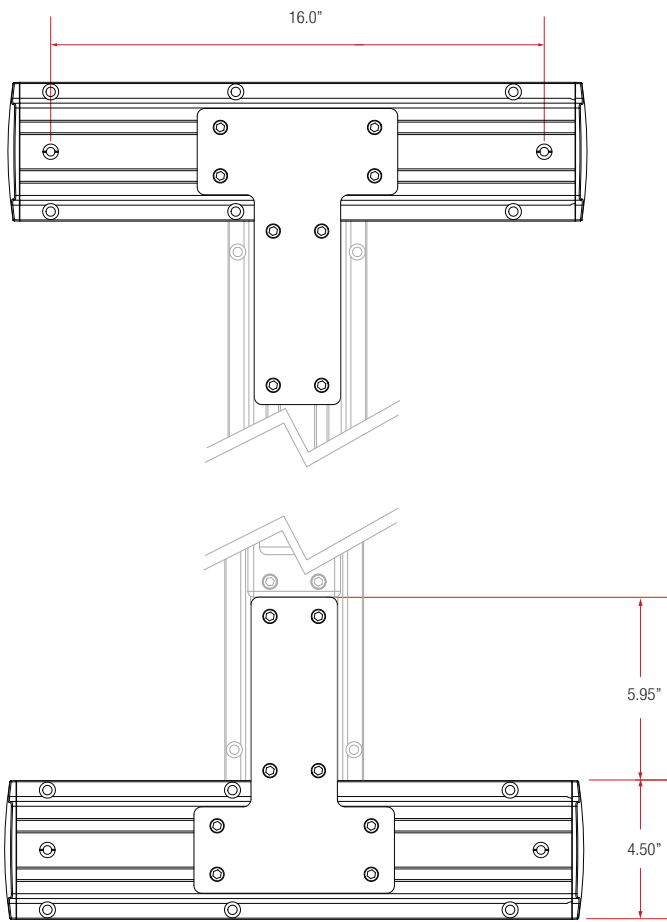
- Allows for optimal location placement
- Dual contact points ensure product remains securely attached
- Use in conjunction with any Fluid™ or CX configuration

INSTALLS IN MINUTES

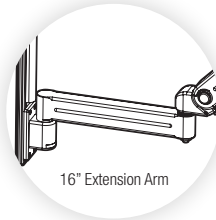
- Installed on external surfaces, omits the need to cut into wall for backing or structural supports
- Quick connecting components ensure effortless and simple installation
- Toggler hardware is provided for convenience

BUILT FOR LIFE

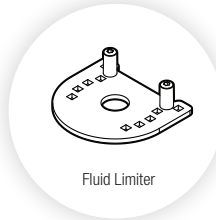
- Designed for long term durability maximizing return on investment
- Modular in design and assembly to easily accommodate fluctuations in requirements and configurations
- Manufactured of anodized aluminum and steel which supports high performance, and long term usage



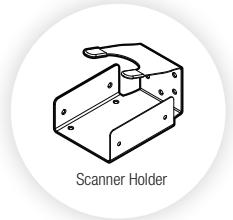
Fluid™
Accessories



16" Extension Arm

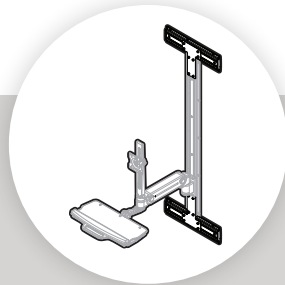


Fluid Limiter



Scanner Holder

Note: The Dual Stud Spanning Wall Track is an accessory item only used in conjunction with all Fluid™ configurations and is purchased separately



Dual Stud Spanning Wall Track

Silver

Finish:



Fluid Series

Model	Description	OPA/OPM Number
11113S	Dual Stud Spanning Wall Track	1811
Shipping weight: 10 lbs. Box dimensions: 18" x 10-3/8" x 2-3/8"		



2700 Oak Industrial Dr. NE
Grand Rapids, MI 49505-6026 USA
1.800.253.1561 | 616.459.3311
Fax: 877.636.3290
www.kv.com

Knapé & Vogt Waterloo - 501 Manitou Drive,
Kitchener Ontario, Canada N2C 1L2
1.866.521.8028 | 1.519.748.5060
Fax 519.748.4783
www.healthcare.kv.com