



Closet and Specialty Hardware

Door & Mirror Hardware	108	Closet Rods	120
Magnetic and Bullet Catches	108	660 Series Heavy-Duty Round Closet Rods	120
Sliding Door Pulls	108	750 Series Heavy-Duty Round Closet Rods	120
Mirror Clips/Glass Clips, Fittings and Latches	109	770 Series Extra-Duty Round Closet Rods	120
		Round Closet Rod Mounting Flanges and Accessories	121
Drawer Accessories	110	880 Series Extra-Duty Oval Closet Rods	122
Index Followers	110	Adjustable Closet Rods	123
Label Holders	110	Closet Brackets	124
Locks	110	1180 Series Closet Shelf Brackets	124
Pulls	110	1190 Series Closet Rods and Shelf Brackets	125
Cabinet Hardware	111	Closet Storage Aids	127
Fasteners	111	Utility Hooks	127
Hinges	111	Coat and Hat Hook	127
Sliding Door Hardware	112	Hang Rod	128
Glass Door Locks	112	Clothing Carrier	128
Door Rollers	112	Towel Bar	128
Sheaves	113		
Fiber Track and Guides	114		
Plastic Tracks and Guides	115		
Plastic Door Track Packaged Assemblies	116		
Steel Tracks and Guides	117		
Roll-Ezy Ball-Bearing Track Systems	118		
Roll-Ezy Aluminum Track Systems	119		

Locks and Door Rollers

Sliding Glass Door Locks

962KA 440 CHR Adjustable Ratchet Lock for 3/4" glass

963KA 440 CHR Adjustable Ratchet Lock for 1/4" glass*

Size: Adjustable 3/4" to 3-3/8"

Finish: Chrome (CHR)

Packed: 12 per carton

Features: 962 fits any door to 3/4" with thumbscrew adjustment
963 fits 1/4" sliding glass doors, keyed alike



965 Ratchet Locks

Size: Adjustable from 1" to 3-3/8"

Finish: Polished Nickel (NP)

Packed: 12 per carton

Features: Adjustable lock for 1/4" sliding glass doors



965 Ratchet Locks

Product	Finish	Keyed
965KA 50 NP	Polished Nickel	Alike

984KA 90 NP Plunger Lock

Size: Mounting flange: 7/8" x 2" with screw holes on 1-1/2" centers; Barrel: 7/8" outside diameter; Plunger travel: 15/32"; Plunger receptacle: 1/2" (outside diameter) x 7/16"

Finish: Polished Nickel (NP)

Packed: 12 per carton

Features: Keyed alike only



Door Rollers

420 STL Door Roller

Size: Frame: 7/16" x 1-7/8";

Nylon roller: 9/16" diameter; 5/16" wide

Finish: Steel (STL)

Packed: 100 per carton



422 STL Door Roller

Size: Frame: 5/8" x 1-13/16";

Nylon roller: 9/16" diameter; 1/2" wide

Finish: Steel (STL)

Packed: 100 per carton



423 STL Door Roller

Size: Frame: 5/8" x 1-13/16";

Steel roller: 5/8" diameter; 1/2" wide

Finish: Steel (STL)

Packed: 100 per carton



424 STL Door Roller

Size: Frame: 1" x 2";

Steel roller: 5/8" diameter; 7/8" wide

Finish: Steel (STL)

Packed: 50 per carton



627 SS Door Roller

Size: Frame: 9/16" x 3/4"

Steel roller: 1/2" diameter;

Finish: Brass-look (BR) case with Stainless Steel (SS) roller

Packed: 100 per carton

Features: Fits 9/16" groove in door rail; held in place by flared points



Sheaves

413X BR Brass Sheave

Size: Frame: 2-15/16" x 7/16"; Wheel: 1-3/16" diameter
Finish: Bronze wheel with a Brass-look (BR) frame
Packed: 50 per carton with screws
Features: Brass wheel on self-lubricating bearing; for use with KV tracks 455, 467, and 469



607 ZC Side Mount Steel Sheave

Size: Frame: 2-5/16" x 1-5/16"; Wheel: 1-3/8" diameter
Finish: Steel (STL)
Packed: 50 per carton
Features: Heavy-duty ball-bearing sheave with side fastening plate; for use with KV tracks 455, 467, and 469



427 STL Steel Sheave

Size: Frame: 2-15/16" x 1/2"; Wheel: 1-3/16" diameter
Finish: Steel (STL)
Packed: 50 per carton
Features: Ball-bearing round groove sheave; for use with KV tracks 455, 467, and 469



620 STL Steel Sheave

Size: Frame: 7/16" x 1-7/8"; Wheel: 11/16" x 9/32"
Finish: Steel (STL)
Packed: 100 per carton
Features: Axle bearing grooved steel roller; for use with KV tracks 455, 467, and 469



429 STL Steel Sheave

Size: Frame: 2-1/4" x 3/8"; Wheel: 1" diameter
Finish: Steel (STL)
Packed: 100 per carton
Features: Round groove sheave; for use with KV tracks 455, 467, and 469



400A STL Concealed Steel Sheave

Size: Case: 1-1/4" x 5/16"; Flange: 1-3/4" x 9/16"
Finish: Steel (STL)
Packed: 100 per carton
Features: Ball-bearing sheave drive type; for use with KV tracks 455, 467, and 469



430 STL Steel Sheave

Size: Frame: 2-3/4" x 1/2"; Wheel: 1-3/8" diameter
Origin: Made in the USA
Finish: Steel (STL)
Packed: 50 per carton
Features: Ball-bearing round groove sheave; for use with KV tracks 455, 467, and 469



402 STL Concealed Steel Sheave

Size: Frame: 1-1/4" x 5/16"; Flange: 2-1/4" x 5/16"
Finish: Steel (STL)
Packed: 100 per carton
Features: Ball-bearing sheave; for use with KV tracks 455, 467, and 469



430 N STL Neoprene Treaded Steel Sheave

Size: Frame: 2-3/4" x 1/2"; Wheel: 1-3/8" diameter
Finish: Steel (STL)
Packed: 50 per carton
Features: Flat neoprene tire, ball-bearing sheave; used without track



580 STL Concealed Steel Sheave

Size: Case: 1-1/4" x 5/16"; Flange: 1-3/4" x 9/16"
Finish: Steel (STL)
Packed: 100 per carton
Features: Nylon round groove sheave for light doors; for use with KV tracks 455, 467, and 469



592 STL Convex Nylon Sheave

Size: Frame: 9/32" x 2-1/4"; Wheel: 1-3/16" diameter
Finish: Steel (STL)
Packed: 100 per carton
Features: Convex nylon wheel for thin doors; for use with inverted KV track 455



582 STL Concealed Steel Sheave

Size: Case: 1-1/4" x 5/16"; Flange: 2-1/4" x 5/16"
Finish: Steel (STL)
Packed: 100 per carton
Features: Nylon round groove sheave; for use with KV tracks 455, 467, and 469



594 NYLON Concave Nylon Sheave

Size: Frame: 2-15/16" x 1/2"; Wheel: 1-3/16" diameter
Finish: Steel (STL)
Packed: 50 per carton
Features: For doors to 1-1/8" thick; nylon round groove wheel; for use with all KV tracks



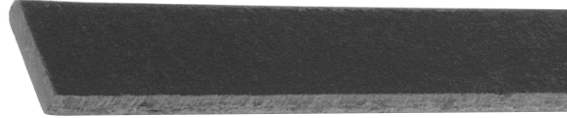
Fiber Track and Guides for Sliding Doors

Fiber Track

2401 FIBRE 72

Size: 1/8" width x 1/2" height x 72" length
Finish: Black
Packed: 1 each

2401



Nylon Guides

2406 Nylon Guide

Size: 1" length x 1/4" width
Packed: 50 per carton

2406



2407 Nylon Guide

Size: 1-3/8" length x 3/8" width
Packed: 50 per carton

2407



Plastic Tracks and Guides for Sliding Doors

Plastic Track and Upper Guides for 1/4" Doors

2412 Series Upper Guides*

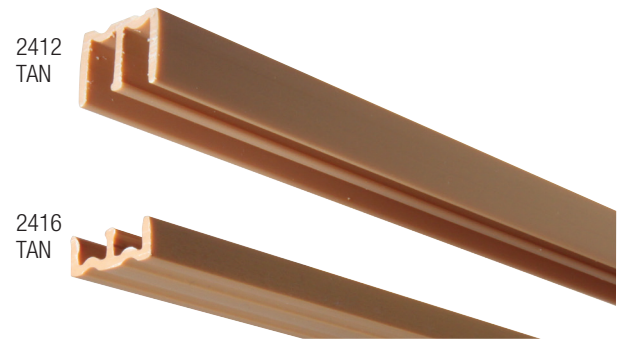
Size: 27/32" width x 9/16" height x 144" length
 Finish: Tan (TAN), Gray (GRY), and Walnut (WAL)
 Packed: 1 each

2412 Series Upper Guides	
Product	Finish
2412 GRAY 144	Gray (GRY)
2412 TAN 144	Tan (TAN)
2412 WAL 144	Walnut (WAL)

2416 Series Lower Tracks*

Size: 27/32" width x 5/16" height x 144" length
 Finish: Tan (TAN), Gray (GRY), and Walnut (WAL)
 Packed: 1 each

2416 Series Tracks	
Product	Finish
2416 GRAY 144	Gray (GRY)
2416 TAN 144	Tan (TAN)
2416 WAL 144	Walnut (WAL)



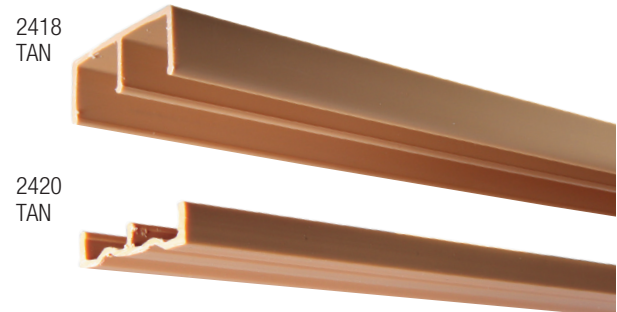
Plastic Track and Upper Guides for 3/4" Doors

2418 TAN 144 Upper Guide

Size: 1-15/16" width x 3/4" height x 144" length
 Finish: Tan (TAN)
 Packed: 1 each

2420 TAN 144 Lower Track

Size: 1-15/16" width x 3/8" height x 144" length
 Finish: Tan (TAN)
 Packed: 1 each

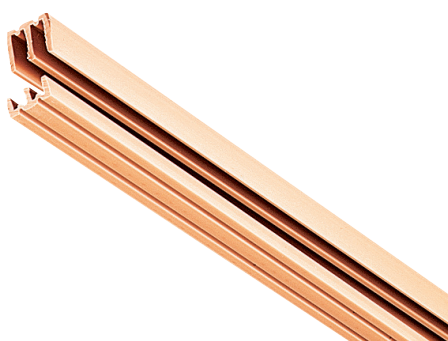


Plastic Door Track Assemblies for Sliding Doors

P2413 1/8" Door Assembly Kits

Size: 48", 60" and 72" lengths
 Finish: Tan (TAN), White (WH)
 Packed: 10 kits per carton

P2413
TAN

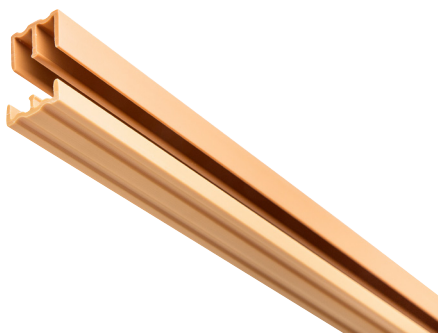


P2413 1/8" Door Assembly Kits			
Product	Finish	Length	Door Size
P2413 TAN 48	Tan (TAN)	48"	1/8"
P2413 TAN 60	Tan (TAN)	60"	1/8"
P2413 TAN 72	Tan (TAN)	72"	1/8"
P2413 WH 48	White (WH)	48"	1/8"
P2413 WH 60	White (WH)	60"	1/8"
P2413 WH 72	White (WH)	72"	1/8"

P2417 1/4" Door Assembly Kits

Size: 48", 60" and 72" lengths
 Finish: Tan (TAN), Walnut (WAL), White (WH)
 Packed: 10 kits per carton

P2417
TAN

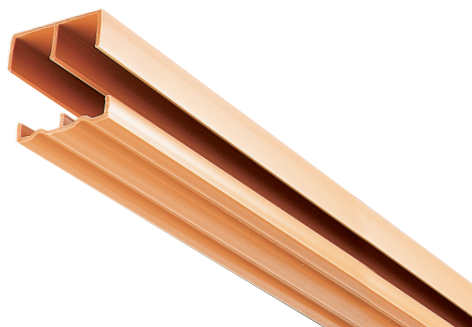


P2417 1/4" Door Assembly Kits			
Product	Finish	Length	Door Size
P2417 TAN 48	Tan (TAN)	48"	1/4"
P2417 TAN 60	Tan (TAN)	60"	1/4"
P2417 TAN 72	Tan (TAN)	72"	1/4"
P2417 WAL 48	Walnut (WAL)	48"	1/4"
P2417 WAL 60	Walnut (WAL)	60"	1/4"
P2417 WAL 72	Walnut (WAL)	72"	1/4"
P2417 WH 48	White (WH)	48"	1/4"
P2417 WH 60	White (WH)	60"	1/4"
P2417 WH 72	White (WH)	72"	1/4"

P2419 3/4" Door Assembly Kits

Size: 48", 60" and 72" lengths
 Finish: Tan (TAN), White (WH)
 Packed: 10 kits per carton

P2419
TAN

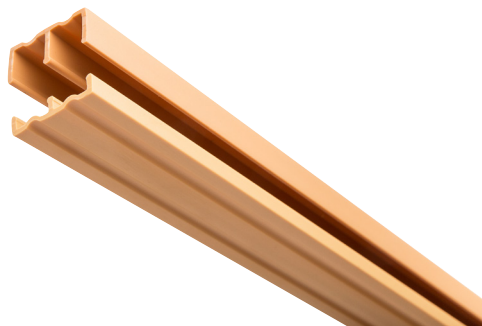


P2419 3/4" Door Assembly Kits			
Product	Finish	Length	Door Size
P2419 TAN 48	Tan (TAN)	48"	3/4"
P2419 TAN 60	Tan (TAN)	60"	3/4"
P2419 TAN 72	Tan (TAN)	72"	3/4"
P2419 WH 48	White (WH)	48"	3/4"
P2419 WH 60	White (WH)	60"	3/4"
P2419 WH 72	White (WH)	72"	3/4"

P2421 1/2" Door Assembly Kits

Size: 48", 60" and 72" lengths
 Finish: Tan (TAN), White (WH)
 Packed: 10 kits per carton

P2421
TAN



P2421 1/2" Door Assembly Kits			
Product	Finish	Length	Door Size
P2421 TAN 48	Tan (TAN)	48"	1/2"
P2421 TAN 60	Tan (TAN)	60"	1/2"
P2421 TAN 72	Tan (TAN)	72"	1/2"
P2421 WH 48	White (WH)	48"	1/2"
P2421 WH 60	White (WH)	60"	1/2"
P2421 WH 72	White (WH)	72"	1/2"

Finish:



☐ Non-stock item – minimum order quantities and additional lead time may apply.

Steel Tracks and Guides for Sliding Doors

455 STL 144 Lower Track

Size: 19/64" height x 21/32" width x 144" length
 Finish: Wrought Steel (STL)
 Origin: Made in the USA
 Packed: 1 each
 Features: 1/2" nails included



455 STL

455 SS 144 Lower Track

Size: 19/64" height x 21/32" width x 144" length
 Finish: Stainless Steel (SS)
 Origin: Made in the USA
 Packed: 1 each
 Features: 1/2" nails included



455 SS

467 STL 144 Lower Track

Size: 19/64" height x 7/16" width x 144" length
 Finish: Steel (STL)
 Origin: Made in the USA
 Packed: 1 each
 Features: 1/2" nails included



467

469 Series Double Lower Track

Size: Double track 1/4" height
 Finish: Zinc (ZC)
 Origin: Made in the USA
 Packed: 1 each
 Features: 1/2" #5 flat head wood nails included



469

469 Series Double Lower Track

Product	Length
469 ZC 72	72"
469 ZC 96	96"
469 ZC 144	144"

953 ZC 144 Top Door Divider

Size: 5/8" height x 5/8" width x 144" length
 Finish: Pre-coated Steel (ZC)
 Origin: Made in the USA
 Packed: 1 each
 Features: Upper T-guide separates the sliding door at the top



953

Roll-Ezy Ball-Bearing Track Systems



Complete Assembly

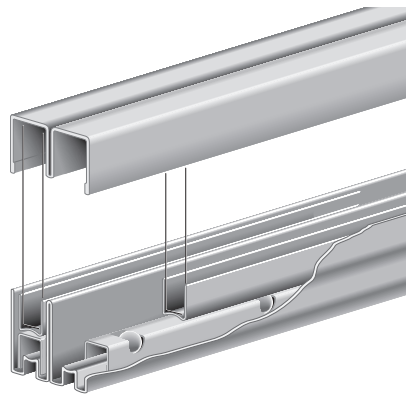
P992 Large Glass Door Track Assembly Kit

Includes: (1) 993 Upper Channel, (2) 995 Shoe, (2) 997 Carrier, (1) 999 Lower Track

Origin: Made in the USA

Packed: 1 set per carton

Features: For large glass door applications, for 1/4" thick glass installations



Complete Assemblies	
Product	Installation Opening Width
P992 ZC 36	36"
P992 ZC 48	48"
P992 ZC 60	60"
P992 ZC 72	72"

Installation Notes & Recommendations:
 Knape & Vogt does not recommend butt-joints and/or openings longer than 12 feet.
 We recommend that the height to width ratio for glass doors should not exceed 2:1.

953 ZC 144 Top Door Divider

Size: 5/8" width x 5/8" height x 144" length

Finish: Zinc (ZC)

Origin: Made in the USA

Packed: 1 each

Features: Pre-coated steel upper T-guide for wood framed installations; for use with 1/4" glass doors only; for large glass door applications



993 ZC 144 Upper Channel

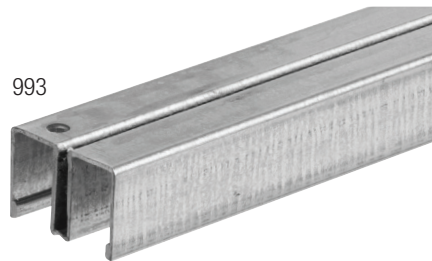
Size: 15/16" wide x 5/8" height x 144" length

Finish: Zinc (ZC)

Origin: Made in the USA

Packed: 1 each

Features: Upper channel for top and ends of opening; wide divider maintains door position; for large glass door applications



995 ZC 144 Door Shoe

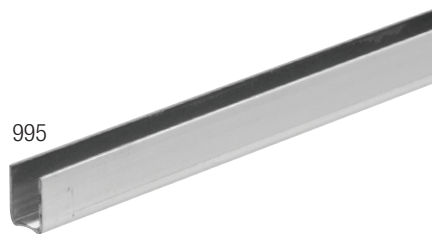
Size: 21/64" wide x 7/16" height x 144" length

Finish: Zinc (ZC)

Origin: Made in the USA

Packed: 1 each

Features: Lightly curved bottom for free rolling position on ball-bearings; for 1/4" glass, scant or full; for large glass door applications



997 ZC 144 Ball Carrier

Size: 3/8" wide x 17/32" height x 144" length

Finish: Zinc (ZC)

Origin: Made in the USA

Packed: 1 each

Features: Ball-bearing carrier has free rolling balls on 3" centers; unique design creates two point suspension between shoe and lower rack; for large glass door applications



999 ZC 144 Lower Track

Size: 1" wide x 1" high x 144" length

Finish: Zinc (ZC)

Origin: Made in the USA

Packed: 1 each

Features: Balls ride freely on curved anvil with no contact against sides of lower track; for large glass door applications



NOTE: For each foot of opening use 1' of upper channel and lower track and shoe (plus 1" per door for overlap), with 1-1/2' of carrier (1-1/2 times door width for each door). Glass is cut 1-1/4" lower than height of opening.

Roll-Ezy Aluminum Track Systems

Complete Assembly



P1092 Small to Medium Glass Door Track Assembly Kit

Includes: (1) 1093 Upper Channel, (4) 1097 Rollers,
(4) 1085 Vinyl Guides, (2) 1095 Shoe, (1) 1099 Lower Track

Packed: 1 set per carton

Features: For small to medium size glass door installations;
for 1/4" thick glass

Complete Assemblies	
Product	Length
P1092 ANOD 36	36"
P1092 ANOD 48	48"
P1092 ANOD 60	60"
P1092 ANOD 72	72"

Installation Notes & Recommendations:
Knap & Vogt does not recommend butt-joints
and/or openings longer than 12 feet.
We recommend that the height to width ratio for
glass doors should not exceed 2:1.



1093 144 Upper Channel

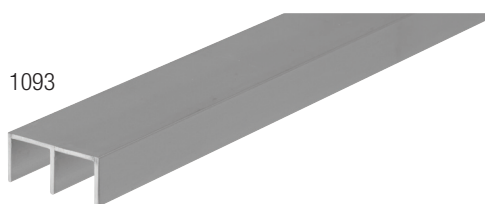
Size: 1-3/16" width x 9/16" height x 144" length

Finish: Aluminum (AL)

Origin: Made in the USA

Packed: 1 each

Features: Double channel for tops, bottoms, and ends; for small to
medium size glass door installations; for 1/4" thick glass



1093

1095 144 Door Shoe

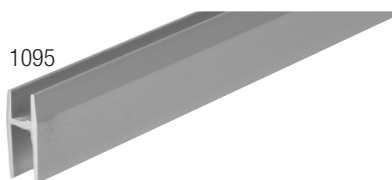
Size: 27/64" width x 1" height x 144" length

Finish: Aluminum (AL)

Origin: Made in the USA

Packed: 1 each

Features: Rollers to be inserted in the bottom; for small to medium
size glass door installations; for 1/4" thick glass



1095

1096 144 Single Lower Track

Size: 31/64" width x 15/32" height x 144" length

Finish: Aluminum (AL)

Origin: Made in the USA

Packed: 1 each

Features: For single doors, or may be used with 1093 double channel
for covered installation; for small to medium size glass door
installations; for 1/4" thick glass



1096

NOTE: Cut glass 1-1/2" lower than opening when using 1096/1093 tracks

1099 144 Double Lower Track

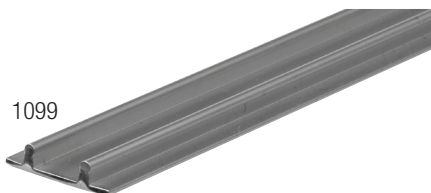
Size: 1-1/16" width x 1/4" height x 144" length

Finish: Aluminum (AL)

Origin: Made in the USA

Packed: 1 each

Features: For small to medium size glass door installations;
for 1/4" thick glass



1099

NOTE: Cut glass 1-3/16" lower than opening when using 1099 track

1085 VINYL Guide

Size: 7/8" length

Finish: Vinyl (VINYL)

Origin: Made in the USA

Packed: 100 per carton

Features: Vinyl guide fits over the top of glass for noiseless operation
in upper channel; for small to medium size glass door
installations; for 1/4" thick glass



1087 RUB Rubber Bumper

Finish: Rubber (RUB)

Packed: 100 per carton

Features: Rubber bumper installs in jambs to cushion glass



1097 NYLON Nylon Rollers

Finish: Nylon (NYLON)

Origin: Made in the USA

Packed: 100 per carton

Features: Rubber roller press fits into bottom of 1095 shoe



1098 ZC Steel Ball-bearing Roller

Finish: Zinc (ZC)

Origin: Made in the USA

Packed: 20 per carton

Features: Steel ball-bearing roller press fits into bottom
of 1095 shoe

