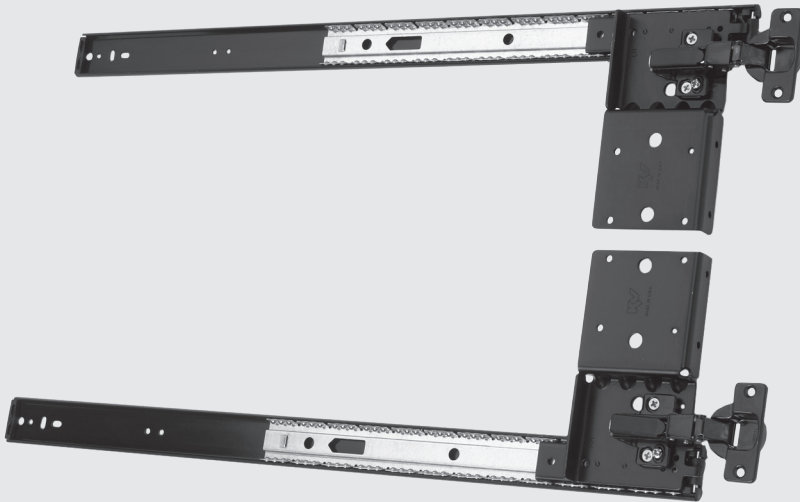




KV 8070/8071/8072 Series Door Slides

POCKET DOOR SLIDES

- 30 lb. Class
- Max. Door Dimension:
42" (h) x 24" (w)



The Knape & Vogt 8070 series pocket door slide is ideal for use in entertainment and home theater cabinets. It is specially designed to install quickly and easily.

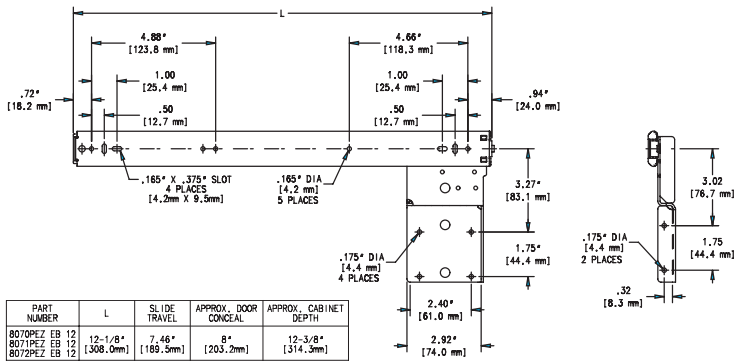
The unique slide design allows the cabinet to act as an installation jig. Additionally, the follower strip bracket allows for the follower strip to be installed after the slides are installed. There is no need to pre-mount the follower strip to the slides.

The 8070 series slides are specially designed to hold doors up to 30 pounds and 42 inches in height. As with all Knape & Vogt drawer slides, the 8070 series door slide is designed to meet or exceed ANSI performance standards as established by BIFMA, BHMA and KCMA.

PRODUCT FEATURES

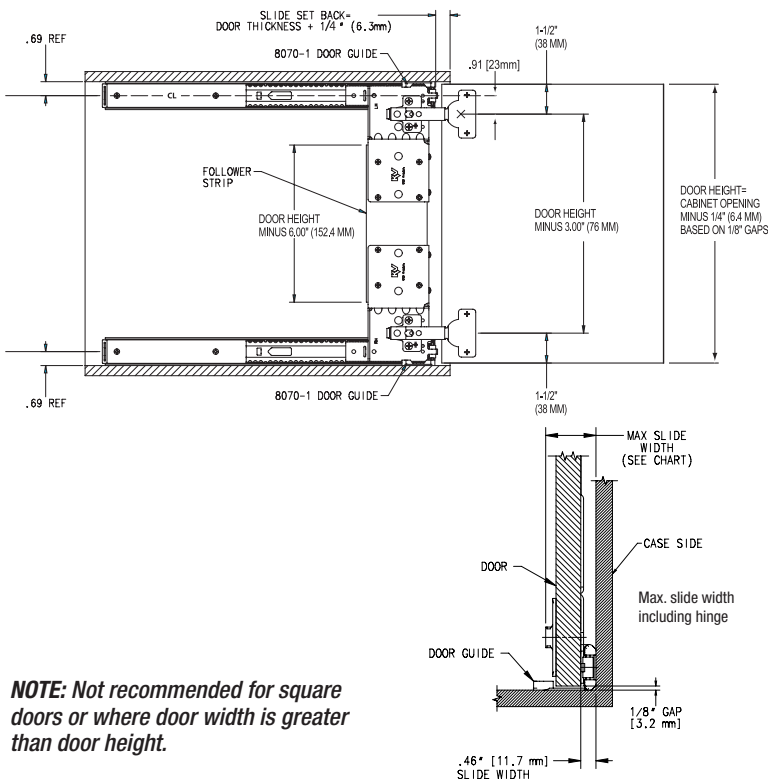
- 30 pound class rated for medium-duty applications.
- Maximum door dimensions: 42" (h) x 24" (w).
- Follower strip bracket has been designed to allow the follower strip to be installed after the slides.
- Self-closing, three-way adjustable isometric door hinge.
- 8071 allows installer to use the hinge/hinge base of their choice.
- Precision steel ball bearings provide smooth and quiet operation.
- Backed by the exclusive Knape & Vogt Limited Lifetime Warranty.

DIMENSIONS



PART NUMBER	L	SLIDE TRAVEL	APPROX. DOOR CONCEAL	APPROX. CABINET DEPTH
8070PEZ EB 12	12-1/8" [308.0mm]	7.46" [189.5mm]	8" [203.2mm]	12-3/8" [314.3mm]
8071PEZ EB 12	14-1/8" [358.8mm]	9.46" [240.3mm]	10" [254.0mm]	14-3/8" [365.1mm]
8072PEZ EB 12	16-1/8" [409.6mm]	11.46" [291.1mm]	12" [304.8mm]	16-3/8" [415.9mm]
8070PEZ EB 14	14-1/8" [358.8mm]	7.46" [189.5mm]	8" [203.2mm]	12-3/8" [314.3mm]
8071PEZ EB 14	16-1/8" [409.6mm]	9.46" [240.3mm]	10" [254.0mm]	14-3/8" [365.1mm]
8072PEZ EB 14	18-1/8" [460.4mm]	11.46" [291.1mm]	12" [304.8mm]	16-3/8" [415.9mm]
8070PEZ EB 16	12-1/8" [308.0mm]	7.46" [189.5mm]	8" [203.2mm]	12-3/8" [314.3mm]
8071PEZ EB 16	14-1/8" [358.8mm]	9.46" [240.3mm]	10" [254.0mm]	14-3/8" [365.1mm]
8072PEZ EB 16	16-1/8" [409.6mm]	11.46" [291.1mm]	12" [304.8mm]	16-3/8" [415.9mm]
8070PEZ EB 18	10-1/8" [265.1mm]	5.46" [139.1mm]	6" [152.4mm]	10-3/8" [265.1mm]
8071PEZ EB 18	12-1/8" [308.0mm]	7.46" [189.5mm]	8" [203.2mm]	12-3/8" [314.3mm]
8072PEZ EB 18	14-1/8" [358.8mm]	9.46" [240.3mm]	10" [254.0mm]	14-3/8" [365.1mm]
8070PEZ EB 20	8-1/8" [210.8mm]	3.46" [87.6mm]	4" [101.6mm]	8-3/8" [210.8mm]
8071PEZ EB 20	10-1/8" [265.1mm]	5.46" [139.1mm]	6" [152.4mm]	10-3/8" [265.1mm]
8072PEZ EB 20	12-1/8" [308.0mm]	7.46" [189.5mm]	8" [203.2mm]	12-3/8" [314.3mm]
8070PEZ EB 22	6-1/8" [158.8mm]	1.46" [37.1mm]	2" [50.8mm]	6-3/8" [158.8mm]
8071PEZ EB 22	8-1/8" [210.8mm]	3.46" [87.6mm]	4" [101.6mm]	8-3/8" [210.8mm]
8072PEZ EB 22	10-1/8" [265.1mm]	5.46" [139.1mm]	6" [152.4mm]	10-3/8" [265.1mm]
8070PEZ EB 24	4-1/8" [108.0mm]	0.46" [11.7mm]	0" [0.0mm]	4-3/8" [108.0mm]
8071PEZ EB 24	6-1/8" [158.8mm]	2.46" [62.5mm]	2" [50.8mm]	6-3/8" [158.8mm]
8072PEZ EB 24	8-1/8" [210.8mm]	4.46" [113.3mm]	4" [101.6mm]	8-3/8" [210.8mm]
8070PEZ EB 26	2-1/8" [50.8mm]	0.46" [11.7mm]	0" [0.0mm]	2-3/8" [50.8mm]
8071PEZ EB 26	4-1/8" [108.0mm]	2.46" [62.5mm]	2" [50.8mm]	4-3/8" [108.0mm]
8072PEZ EB 26	6-1/8" [158.8mm]	4.46" [113.3mm]	4" [101.6mm]	6-3/8" [158.8mm]
8070PEZ EB 28	1-1/8" [31.8mm]	0.46" [11.7mm]	0" [0.0mm]	1-3/8" [31.8mm]
8071PEZ EB 28	3-1/8" [82.7mm]	2.46" [62.5mm]	2" [50.8mm]	3-3/8" [82.7mm]
8072PEZ EB 28	5-1/8" [133.5mm]	4.46" [113.3mm]	4" [101.6mm]	5-3/8" [133.5mm]

INSTALLATION



NOTE: Not recommended for square doors or where door width is greater than door height.

SPECIFICATIONS

model 8070/8071/8072

mounting Mounts directly to cabinet side/cabinet top

load rating 30 pound class

max. door dimensions 42" (h) x 24" (w)

finish Ebony Black (EB) - Black

action Progressive movement on precision steel ball bearings

- additional features**
- Slides have been designed so that they index to cabinet top and side. Installer need only set back the slides 1/4" more than door thickness.
 - Follower strip bracket has been designed to allow the follower strip to be installed after slides are installed.
 - Metal ball retainer holds three bearings per inch of race for smooth and quiet operation.
 - Multiple hinge options allow for a wide variety of door applications - Inset, Free Swing, Overlay, Thick and Extra-thick.

sizes (8070/8071/8072) 12", 14", 16", 18", 20", 22", 24"

packaged Poly Pack (8070PEZ): 1 set per poly pack w/mounting hardware. Package includes a pair of standard 35mm inset hinges and hinge bases.

Poly Pack (8071PEZ): 1 set per poly pack w/mounting hardware. Package does not include hinges or hinge bases.

Poly Pack (8072PEZ): 1 set per poly pack w/mounting hardware. Package includes a pair of standard hinge bases. Hinges must be ordered separately. See ordering info below.

Hinge Kits

ordering information	Hinges: (2 hinges w/ screws)
	Standard: 8080 HKEZSEB
	Free-Swing: 8080 HKEZFEB
	Overlay Dr.: 8080 HKEZLEB
	Thick Dr.: 8085 HKEZTEB
	Ex.-Thick Dr. 8086 HKEZXEB

Raised Panel

Door Roller: 8090P CR (1 each w/screw)

NOTE: Consult price list or KV Customer Service for stock availability information on different sizes, packages and finishes.

Hinge Options	Hinge Description	Door Thickness	Edge Bore* Distance (DBE)	Hinge Cup Bore Dia.	Hinge Cup Bore Depth	Maximum Slide Width Including Hinge for Partition Installers	Partial Overlay
8080	Standard Hinge	3/4" [19mm]	1/4" [6mm]	1-3/8" [35mm]	11.8mm	1-25/32" [45.2mm]	N/A
8080FS	Standard Hinge w/ Free Swing Knuckles	3/4" [19mm]	1/4" [6mm]	1-3/8" [35mm]	11.8mm	1-25/32" [45.2mm]	N/A
8080L	Overlay Door	3/4" [19mm]	3/8" [9.5mm]	1-37/64" [40mm]	13.2mm	1-25/32" [45.2mm]	1/4" [6.3mm]
8085	Thick Door	1" [25.4mm]	5/16" [8mm]	1-37/64" [40mm]	13.2mm	2-5/32" [54.8mm]	N/A
8086	Extra-Thick Door	1-1/4" [32mm]	1/2" [12.7mm]	1-37/64" [40mm]	13.2mm	2-15/32" [61.9mm]	N/A

*Edge bore distance shown are approximate. Always bore a test block to verify hinge cup locations.

Knappe & Vogt reserves the right to change product specifications at any time without notice and without incurring responsibility for existing units.