



KNAPE  
& VOGT®



## *Xtend Dual Monitor Arm*

Dual Screen, Dual arm Pole mounted Xtend Arm. Economy priced dual screen monitor support with independent arm adjustments for each screen. The arms provide 26" of reach and 13" of usable height adjustment. Its counterbalanced spring technology allows for a 2 to 14 lbs load per arm and provides a longer life for the product by not relying on gas cylinders.

### *7823SJ05 Series*

#### Features & Benefits

Best in class arm provides 26.0" of reach with 13.0" of usable height adjustment

Short mounting pole allows monitor arm to fold into a 4-3/8" work area

Tool-less clamp installation makes assembly quick and easy

Flexibility and more options for the end user with a simple, easy-to-use Allen wrench adjustment to counterbalance the weight of screens

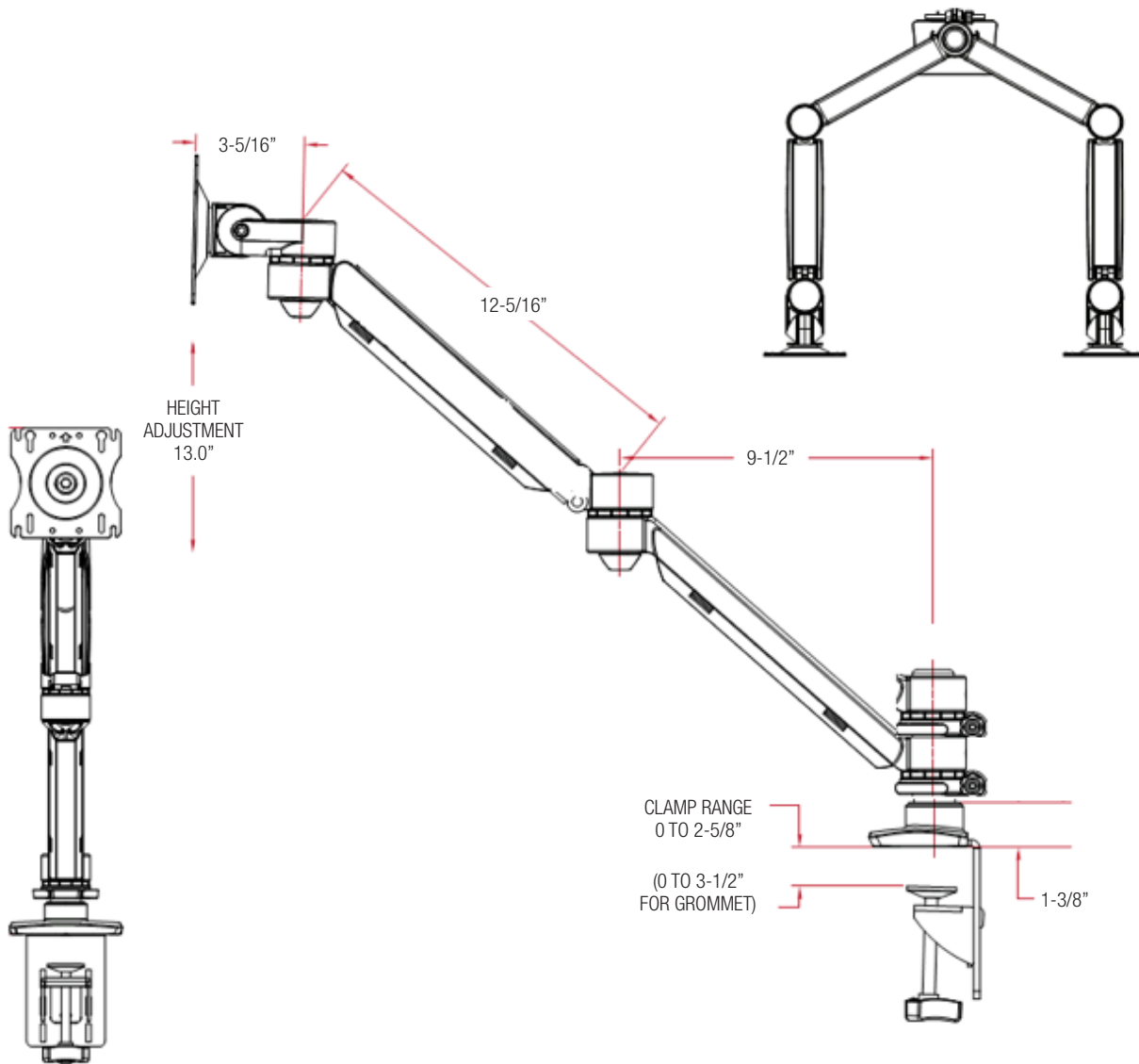
Standard VESA 75 mm x 75 mm and 100 mm x 100 mm hole patterns

Clamping range of 0" to 2-5/8"

Clamp and grommet mount standard

Counterbalanced load rating of 2 to 14 lbs per arm

Cable management hides the cables to improve aesthetics



## 7823SJ05 Dual Screen, Dual arm Pole Mounted Xtend Arm

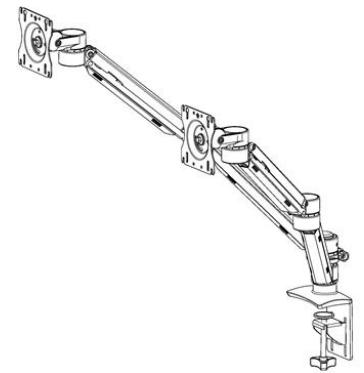
### Ancillary Products:

- Use with Knape & Vogt CPU holders and keyboard supports

Model	Description
7823SJ05	Dual Screen, two Double-Extension Arms with one Height Adjustable Segment per Screen Silver
7823BJ05	Dual Screen, two Double-Extension Arms with one Height Adjustable Segment per Screen Black



Finish: Black, Silver



Notes: 1. Weight = packaged shipping weight per unit. 2. Specifications are subject to change without notice.