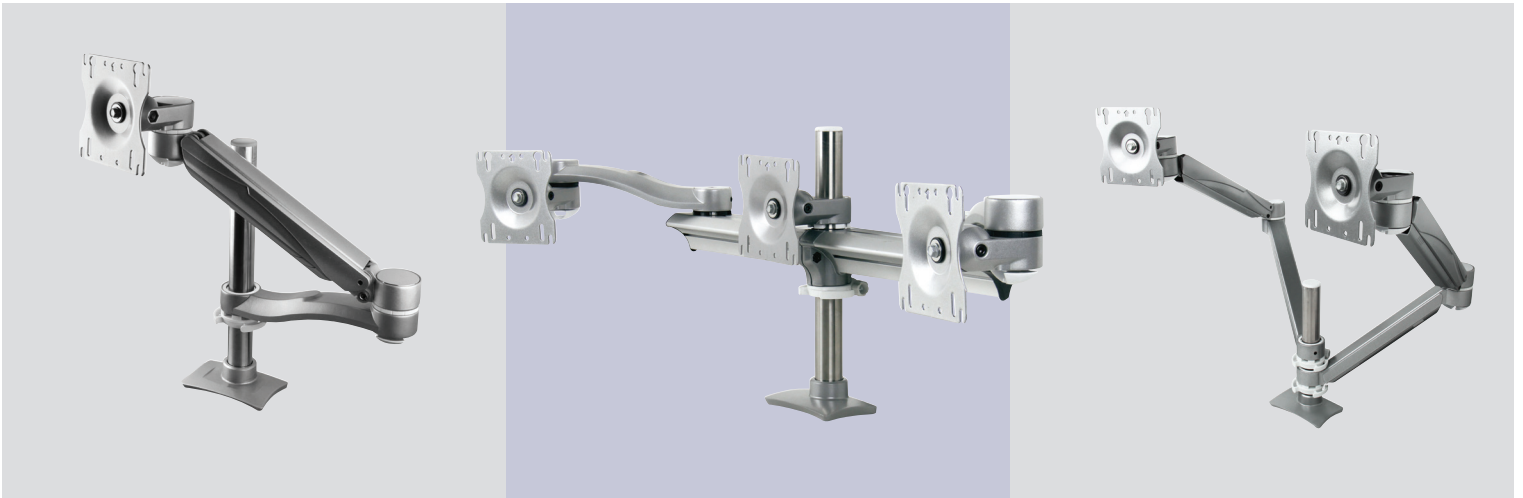


# THE CONCERTO

## 7800 SERIES REFERENCE GUIDE

Strength and beauty, two qualities that aren't mutually exclusive. Both co-exist quite comfortably with our line of Concerto monitor arms. Designed to be dependable in any situation, Concerto's refined aesthetics, intuitive modular design and solid construction put it in a class of its own.



### *Beauty*

Form follows function. The Concerto is easier to use and more flexible than most arms and with a sleek, refined look, it will be a complement to any modern office workspace.

### *Modularity*

Change happens, and we understand. The Concerto was created to be ultra-adaptable. From single screen to eight screen options as well as desk top to wall mounting applications, virtually anything is possible with the Concerto.

### *Performance*

Concerto is the ideal solution to support flat panel displays. With the greatest reach of any monitor arm in its class today, the Concerto has a 24" reach and a 13" counter balanced arm height adjustment, making this arm the perfect fit for any type of monitor application.

# CONCERTO REFERENCE GUIDE

## Pole Mount Monitor/Laptop Supports - SINGLE SCREEN

Includes Quick Connect Adapter Bracket for Monitor Arms



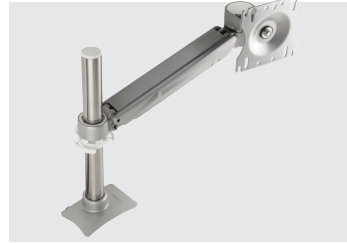
*7805S*

- No arm
- Pole Position (no extension arms)
- 12" pole



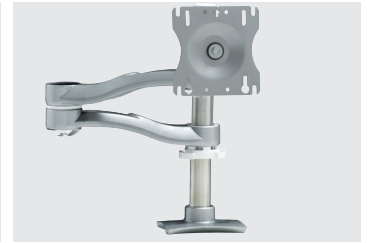
*7810S*

- Extension Arm
- 12" pole



*7810SH*

- Height Adjustable Extension Arm
- 12" pole

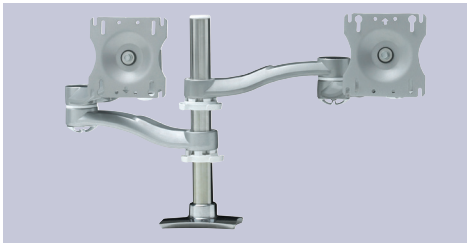


*7815S*

- Double Extension Arm
- Extension Arm (x2)
- 12" pole

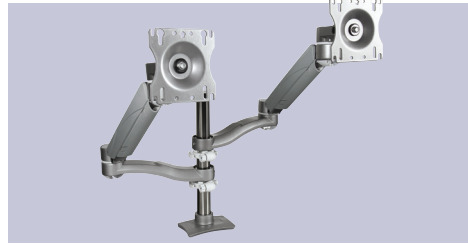
## Pole Mount Monitor Supports - DUAL SCREEN

Includes Quick Connect Adapter Bracket for each monitor support



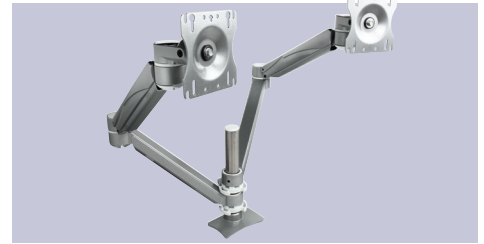
*7820S*

- Double Extension Arm (x2)
- Maximum 32" screen width
- 12" pole



*7820SH*

- Double Extension Arm (x2)
- Extension Arm + Height Adjustable Extension Arm
- Maximum 35" screen width
- 12" pole

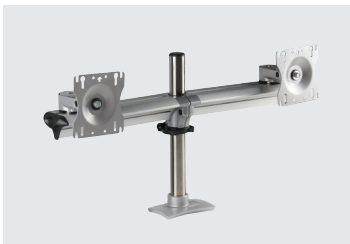


*7823SH09*

- Double Extension Arm (x2)
- Extended Length Fixed Arm + Height Adjustable Extension Arm
- Maximum 35" screen width
- 12" pole

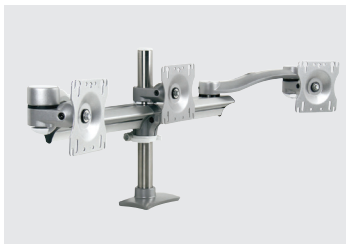
## Pole/Beam Mount Monitor Supports - MULTI SCREEN

Includes Quick Connect Adapter Bracket for each monitor support



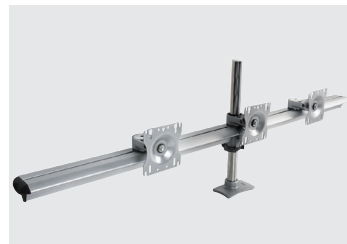
*7825S*

- Dual screen beam mount (no extension arms)
- 10" beam segment (x2)
- Maximum 20" screen width
- Grommet & clamp mount
- 16" pole



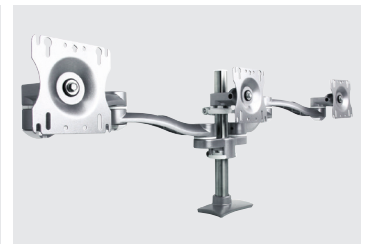
*7830S*

- Parabolic three screen beam mount
- Monitor mount for pole
- 10" beam segment (x2)
- Extension Arm (x2)
- Maximum 18" screen width
- Grommet & clamp mount
- 16" pole



*7835S*

- Three screen beam mount (no extension arms)
- 24" beam segment (x2)
- Maximum 24" screen width
- Grommet & clamp mount
- 16" pole



*7830SD12*

- Three screen beam mount
- Monitor mount for pole +
- Double Extension Arm (x2) joined by Dual Hub
- Maximum 18" screen width
- Grommet & clamp mount
- 12" pole

## Concerto Accessories



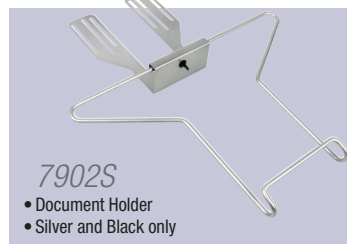
*7801TS*

- Laptop Support
- Silver and Black only



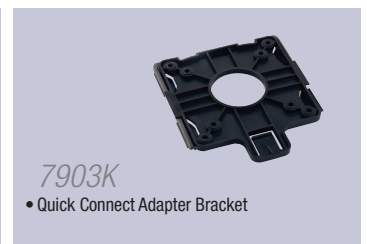
*7801TDS*

- Laptop Support with Document Holder
- Silver and Black only



*7902S*

- Document Holder
- Silver and Black only



*7903K*

- Quick Connect Adapter Bracket

# CONCERTO REFERENCE GUIDE



**7815SH**

- Double Extension Arm
- Extension Arm +
- Height Adjustable Extension Arm
- 12" pole



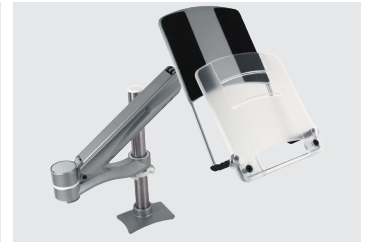
**7818SH09**

- Double Extension Arm
- Extended Length Fixed Arm +
- Height Adjustable Extension Arm
- 9" pole



**7815TSH Laptop Support**

- Includes laptop support
- Double Extension Arm
- Extension Arm +
- Height Adjustable Extension Arm
- Silver only
- 12" pole

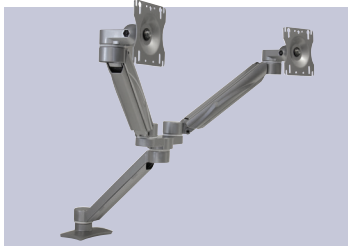


**7815TDSH Laptop Support**

- Includes laptop support with document holder
- Double Extension Arm
- Extension Arm +
- Height Adjustable Extension Arm
- Silver only
- 12" pole

## DUAL SCREEN with Dual Hub

Includes Quick Connect Adapter Bracket for each monitor support



**7826SHD02 (no pole)**

- Extended Length Fixed Arm
- Height Adjustable Extension Arm (x2)
- Maximum 23.7" screen width



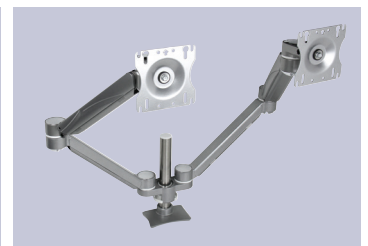
**7820SD12**

- Double Extension Arm (x2)
- Extension Arm + Extension Arm
- Maximum 36" screen width
- 12" pole



**7820SHD12**

- Double Extension Arm (x2)
- Extension Arm +
- Height Adjustable Extension Arm
- Maximum 39" screen width
- Grommet mount only
- 12" pole



**7823SHD09**

- Double Extension Arm (x2)
- Extended Length Fixed Arm +
- Height Adjustable Extension Arm
- Maximum 42" screen width
- Grommet mount only
- 9" pole



**7840S**

- Parabolic quad screen beam mount
- Extension Arm (x2)
- 24" beam segment (x2)
- Maximum 21" screen width
- Grommet mount only
- 16" pole



**7945S**

- Four screen beam mount (no extension arms)
- 10" beam segment (x4)
- Maximum 20" screen width
- Grommet & clamp mount
- 30" pole



**7960S**

- Six screen beam mount (no extension arms)
- 24" beam segment (x4)
- Maximum 24" screen width
- Grommet & clamp mount
- 30" pole

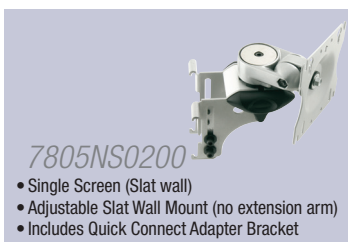


**7980S**

- Double parabolic quad beam mount
- Extension Arm (x4)
- 24" beam segment (x4)
- Maximum 21" screen width
- Grommet & clamp mount
- 30" pole

## NON POLE MOUNT OPTIONS

Includes Quick Connect Adapter Bracket for each monitor support



**7805NS0200**

- Single Screen (Slat wall)
- Adjustable Slat Wall Mount (no extension arm)
- Includes Quick Connect Adapter Bracket



**7905MS0350**

- Single Screen (Wall mount)
- Wall Mount 3.5" hole centers (no extension arm)
- Includes Quick Connect Adapter Bracket

## Colour Options

To specify colour, other than silver, replace the "S" in the part number with:

**B** = Black **W** = White **P** = Polished

For example, to get a "7810SH" in white, order 7810WH.

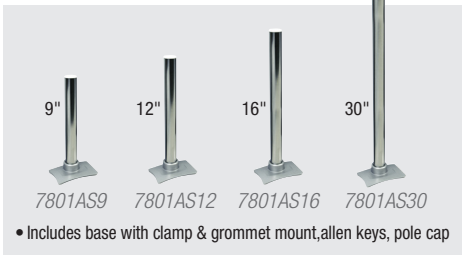


# CONCERTO REFERENCE GUIDE

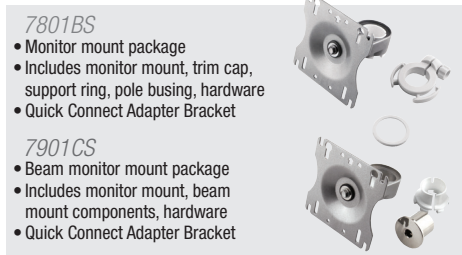
## Build your own

Concerto offers a wide range of components and extension arm options.

### Clamp/Grommet



- Includes base with clamp & grommet mount, allen keys, pole cap

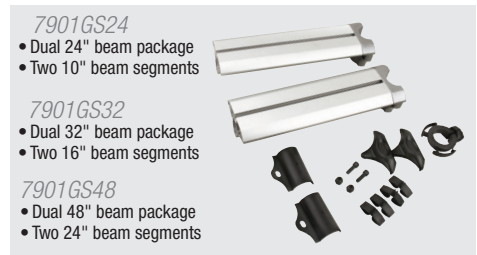


#### 7801BS

- Monitor mount package
- Includes monitor mount, trim cap, support ring, pole busing, hardware
- Quick Connect Adapter Bracket

#### 7901GS

- Beam monitor mount package
- Includes monitor mount, beam mount components, hardware
- Quick Connect Adapter Bracket



#### 7901GS24

- Dual 24" beam package
- Two 10" beam segments

#### 7901GS32

- Dual 32" beam package
- Two 16" beam segments

#### 7901GS48

- Dual 48" beam package
- Two 24" beam segments

### Slat Wall



#### 7901NS0200

- Adjustable Slat Wall Mount Component Package
- Includes adjustable slat wall brackets on 2" beam section, End caps & Allen Keys

### Wall Mount



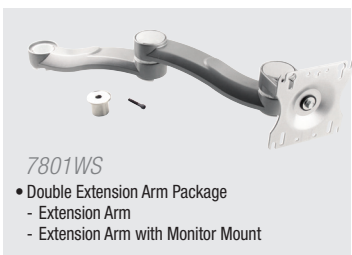
#### 7901MS0350

- Wall Mount Component Package - 3.5" hole centres
- Includes wall mount brackets on 2" beam section, End caps & Allen Keys

## Beam/Pole Mount Extension Arm Packages

Includes Quick Connect Adapter Bracket for each monitor support

### Beam Mount



#### 7801WS

- Double Extension Arm Package
- Extension Arm
- Extension Arm with Monitor Mount



#### 7801WSH

- Double Height Adjustable Extension Arm Package
- Extension Arm
- Height Adjustable Extension Arm with Monitor Mount



#### 7801YUS

- Single Extension Arm Package
- Extension Arm with Monitor Mount



#### 7801YSH

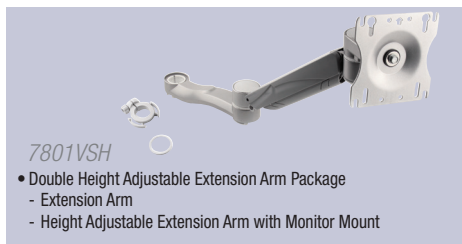
- Single Height Adjustable Extension Arm Package
- Height Adjustable Extension Arm with Monitor Mount

### Pole Mount



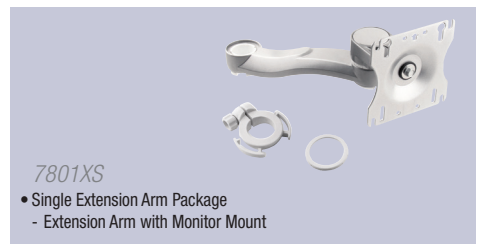
#### 7801VS

- Double Extension Arm Package
- Extension Arm
- Extension Arm with Monitor Mount



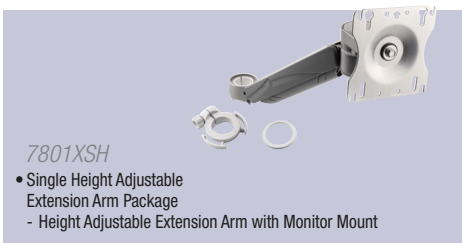
#### 7801VSH

- Double Height Adjustable Extension Arm Package
- Extension Arm
- Height Adjustable Extension Arm with Monitor Mount



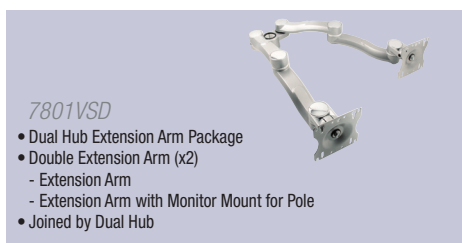
#### 7801XS

- Single Extension Arm Package
- Extension Arm with Monitor Mount



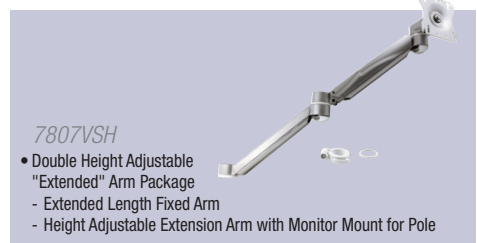
#### 7801XSH

- Single Height Adjustable Extension Arm Package
- Height Adjustable Extension Arm with Monitor Mount



#### 7801VSD

- Dual Hub Extension Arm Package
- Double Extension Arm (x2)
- Extension Arm
- Extension Arm with Monitor Mount for Pole
- Joined by Dual Hub



#### 7807VSH

- Double Height Adjustable "Extended" Arm Package
- Extended Length Fixed Arm
- Height Adjustable Extension Arm with Monitor Mount for Pole



2700 Oak Industrial Dr. NE  
Grand Rapids, MI 49505-6026 USA  
1.800.253.1561 | 616.459.3311  
Fax: 877.636.3290  
[www.kv.com](http://www.kv.com)

This and other KV literature is available for download at [www.kv.com](http://www.kv.com) > Resource Library

Knap & Vogt reserves the right to change product specifications at any time without notice and without incurring responsibility for existing units.  
©2016 Knap & Vogt. KV and the KV logo are trademarks of Knap & Vogt.