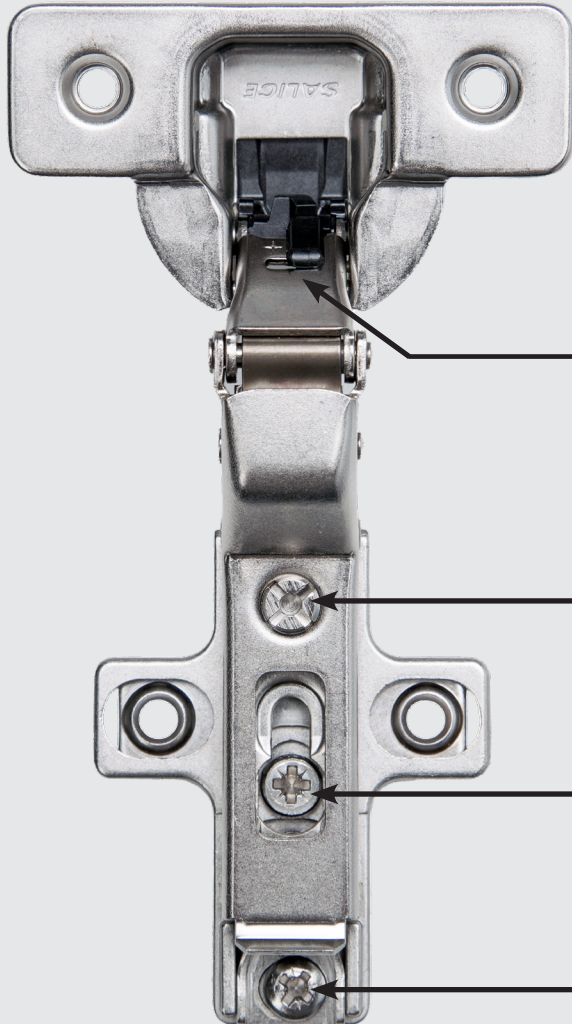




KV SALICE SOFT-CLOSE HINGE KIT PROGRAM

POCKET DOOR HINGES

- Nickel & Titanium Finish
- 3-Way Adjustable



The Knappe & Vogt Salice Soft-Close Hinge Kit delivers precision-engineered alignment with three independently adjustable cams—offering fine-tuned control over horizontal, depth, and vertical positioning. With integrated motion control, this hinge system is optimized for pocket door applications and ensures smooth, fluid operation and dependable performance with every close.

Soft-Close Adjustment

The soft-close adjustment allows for optimal decelerating speed to any kind of door, regardless of size or application.

- + Soft-close engages at 30°
- Soft-close engages at 10°

Horizontal (Lateral) Adjustment Cam

The horizontal (lateral) adjustment range is 6mm (-1.5mm to +4.5mm).

Vertical (Height) Adjustment Cam

The vertical (height) adjustment range is 4mm (-2mm to +2mm).

Depth Adjustment Cam

The depth adjustment range is 3.1mm (-0.5mm to +2.8mm) for all hinge bases.

PRODUCT FEATURES

- Three-way cam hinges provide fast and easy door adjustments. Horizontal, vertical and depth changes can be made without loosening any screws.
- Packaged for use with KV 8071, 8081 and 8091 Pocket Door Systems. Packaging includes hinge bases, hinges, mounting screws and cover caps.
- Three types of hinges are available to fit a wide variety of pocket door applications - standard inset, partial overlay and extra-thick doors.
- Backed by the exclusive Knappe & Vogt Limited Lifetime Warranty

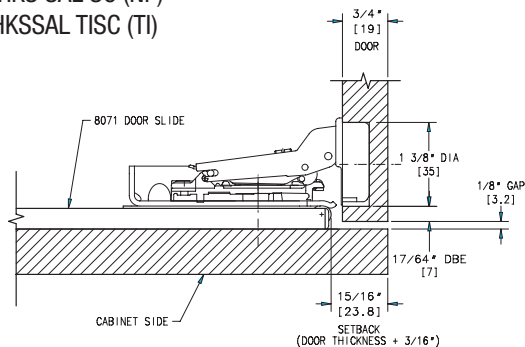
SALICE HINGE KIT TECHNICAL INFORMATION

FRAMELESS APPLICATIONS

STANDARD INSET

Frameless, inset application with 3/4" thick door

- 8080 HKS SAL SC (NP)
- 8080HKSSAL TISC (TI)

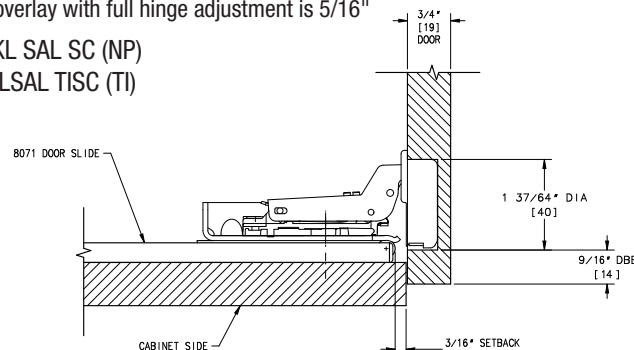


PARTIAL OVERLAY

Frameless application with 3/4" thick door

Maximum overlay with full hinge adjustment is 5/16"

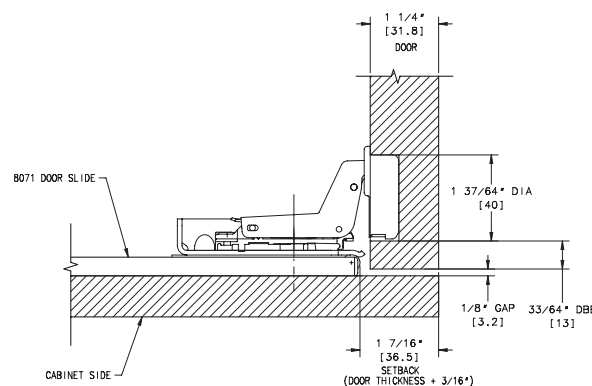
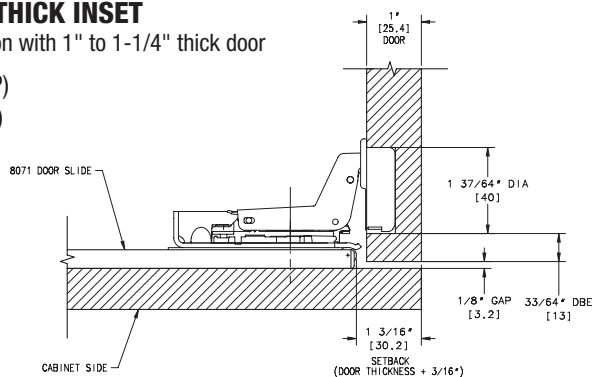
- 8080 HKL SAL SC (NP)
- 8080HKLSAL TISC (TI)



THICK AND EXTRA-THICK INSET

Frameless, inset application with 1" to 1-1/4" thick door

- 8086 HKX SAL SC (NP)
- 8086HKXSAL TISC (TI)

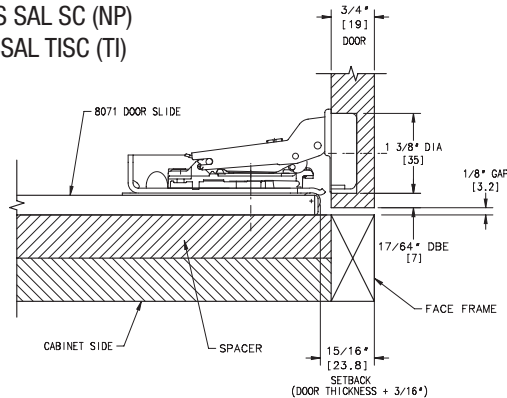


FACE-FRAME APPLICATIONS

STANDARD INSET

Face-frame application with 3/4" thick door

- 8080 HKS SAL SC (NP)
- 8080HKSSAL TISC (TI)

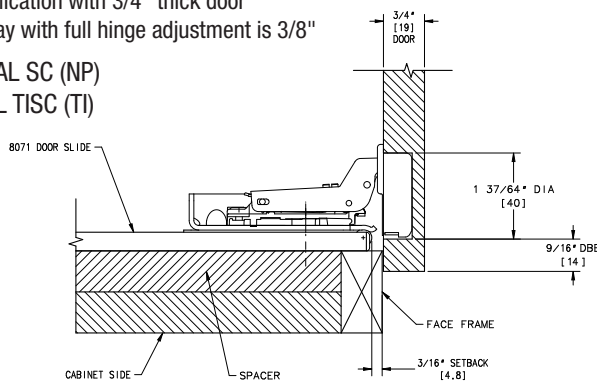


PARTIAL OVERLAY

Face-frame application with 3/4" thick door

Maximum overlay with full hinge adjustment is 3/8"

- 8080 HKL SAL SC (NP)
- 8080HKLSAL TISC (TI)



HINGE SETUP CHART

Hinge Options	Hinge Description	Door Thickness	Edge Bore Distance (DBE)	Hinge Cup Bore Diameter	Maximum Slide Width (Including Hinge for Partition Installations)	Partial Overlay
8080 HKS SAL SC (NP) 8080HKSSAL TISC (TI)	Standard Hinge	3/4" [19mm]	17/64" [7mm]	1-3/8" [35mm]	1-21/32" [42.1mm]	N/A
8080 HKL SAL SC (NP) 8080HKLSAL TISC (TI)	Partial Overlay Door	3/4" [19mm]	9/16" [14mm]	1-37/64" [40mm]	1-7/8" [47.6mm]	5/16" [8.5mm]
8086 HKX SAL SC (NP) 8086HKXSAL TISC (TI)	Extra-Thick Door	1" to 1-1/4" [25.4mm to 32mm]	33/64" [13mm]	1-37/64" [40mm]	2-5/16" [58.7mm]	N/A