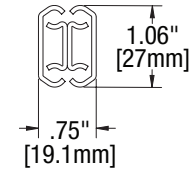
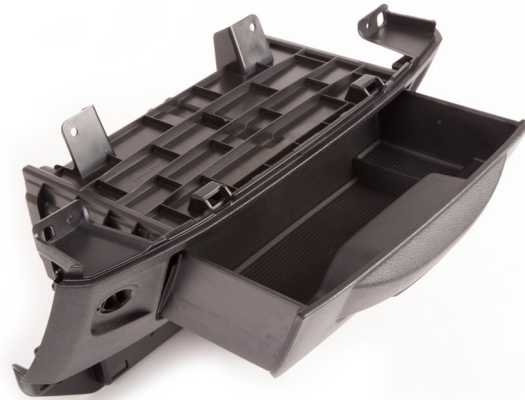


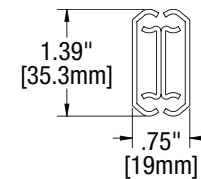
Pull-Out Drawer

- Market Need – Storage for pull out drawer
- Design Challenges – Structural integrity attachment method, and minimize noise.
- Solution – Sliding system that allows drawer to be opened and closed. Slide features incorporated into designs like this include:
 - I-beam for reinforcement for increased stability
 - Brackets for ease of attachment
 - Bumpers/stops to reduce noise
 - Black or zinc finish



- 27mm (1.06") tall
- 2 member partial extension
- 19.1mm (.75") wide

[Download Profile](#)



- 35.3mm (1.39") tall
- 2 member partial extension
- 19mm (.75") wide

[Download Profile](#)